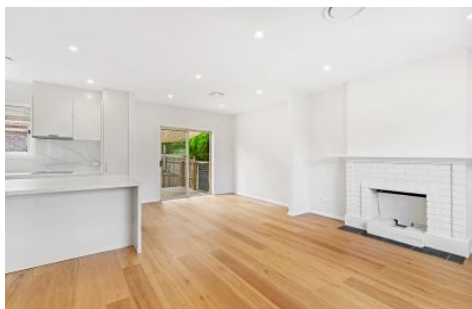


# SALIBA



## 30 Oakleigh Avenue Thornleigh NSW

2  2  1 

Siobhan Robinson of Saliba Estate Agents is proud to present 30 Oakleigh Avenue Thornleigh for lease.

This fully renovated and light filled two-bedroom cottage, nestled among established gardens, is ideally positioned within a family-orientated community close to Thornleigh Train Station and the shopping precinct.

The floor plan provides an open plan living and dining area with easy access to a private, paved outdoor entertaining area. It also includes a fully renovated kitchen, two bedrooms, each with built-in robes, two bathrooms, and a laundry.

Key Features:

[For full version visit the website](https://www.saliba.com.au/30-oakleigh-avenue-thornleigh-nsw-8704981/)

**Type** : House

**Price** : \$800 per week

**View** : <https://www.saliba.com.au/30-oakleigh-avenue-thornleigh-nsw-8704981/>

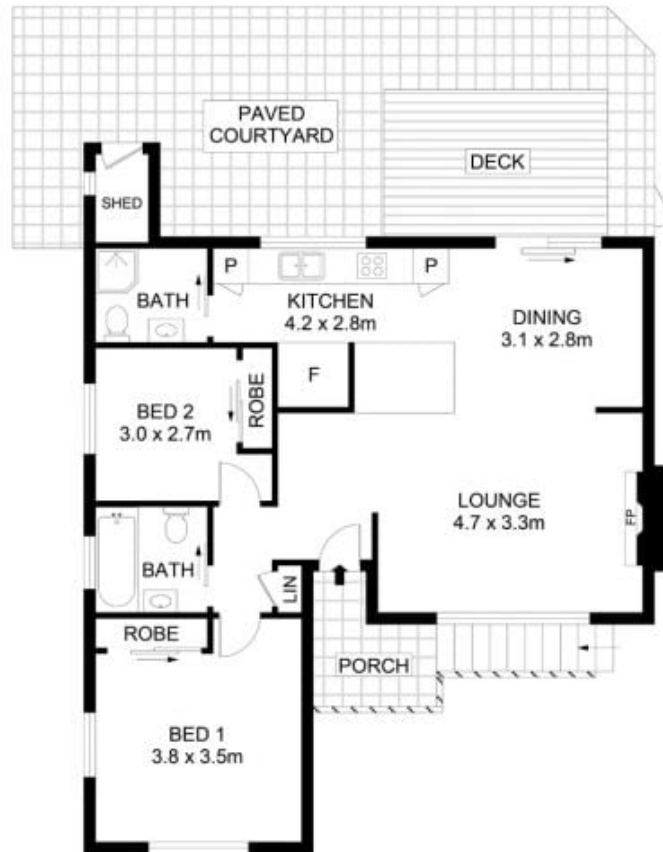


**Siobhan Robinson**  
(02) 4504 8004



**Gokul Soni**  
02 4504 8004

<https://www.saliba.com.au>



30 Oakleigh Avenue, Thornleigh



Disclaimer- Floor Plan measurements are approximate and are for illustrative purposes only. While we cannot doubt the floor plans accuracy, we make no guarantee, warranty or representation as to the accuracy and completeness of the floor plan

TOTAL AREA : 116 SQM