

# SALIBA



## 3B Poinciana Close Mount Colah NSW

4 3 2

- ? Set on a rare 1,500m<sup>2</sup> parcel just 350m to station with direct city access
- ? Fully renovated 270m<sup>2</sup> residence with peaceful bushland views
- ? Newly rendered façade with high-quality acrylic finish - creating a striking first impression
- ? New timber-look double garage door creating modern street appeal

**Type** : House  
**Price** : Contact Agent  
**Land Size** : 1540 sqm  
**View** : <https://www.saliba.com.au/3b-poinciana-close-mount-colah-nsw-8691183/>

### DESIGNER KITCHEN & ENTERTAINING

- ? 20mm Italian-inspired Toscano Florrie engineered stone benchtop and splashback with waterfall edge
- ? Luxury timber chalk-finish cabinetry + 2.2m breakfast bar

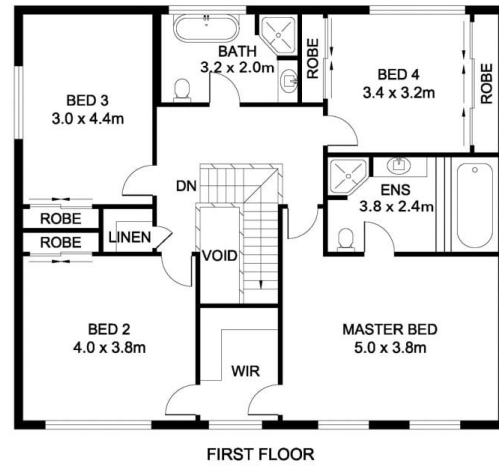
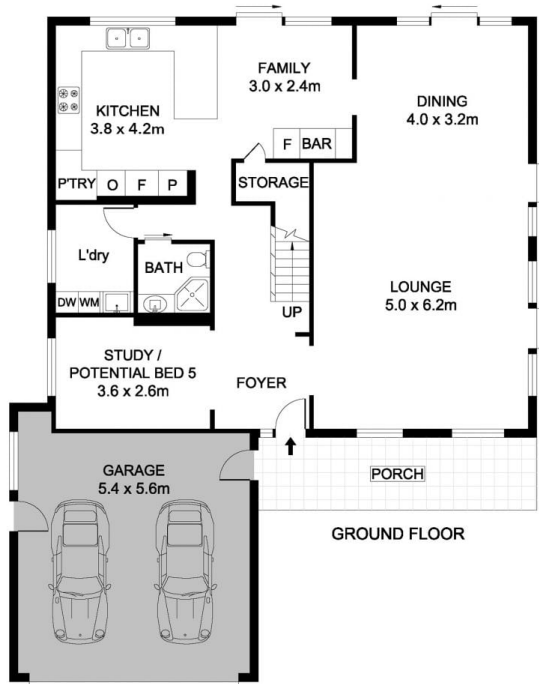
[For full version visit the website](#)



**Anthony Chau**  
(02) 4504 8004



**Iain Rosekilly**  
(02) 4504 8004



## 3B Poinciana Close, Mt Colah



Disclaimer- Floor Plan Measurements are approximate and are for illustrative purposes only. While we cannot doubt the floor plans accuracy, we make no guarantee, warranty or representation as to the accuracy and completeness of the floor plan



TOTAL AREA :- 238 SQM