

SALIBA



1 Janita Crescent Mount Colah NSW

5 🛏 2 🚿 2 🚗

This beautifully designed home offers a perfect blend of comfort and functionality, with a large kitchen, multiple living spaces, a private master retreat, and seamless indoor-outdoor flow. Surrounded by landscaped gardens and complete with a spacious entertaining deck, and workshop and double garage, it's ideal for both relaxed family living and stylish entertaining. Plenty of space for storage of your caravan, boat and trailer.

Type : House
Price : \$ 1,977,000
Building Size : 295 sqm
Land Size : 1017 sqm
View : <https://www.saliba.com.au/1-janita-crescent-mount-colah-nsw-8470560/>

Internal Features:

- Spacious open plan living and dining area designed for family comfort and entertaining
- Modern large kitchen with a seamless flow to the covered outdoor entertaining deck
- Multiple living zones, including a family room and

[For full version visit the website](#)



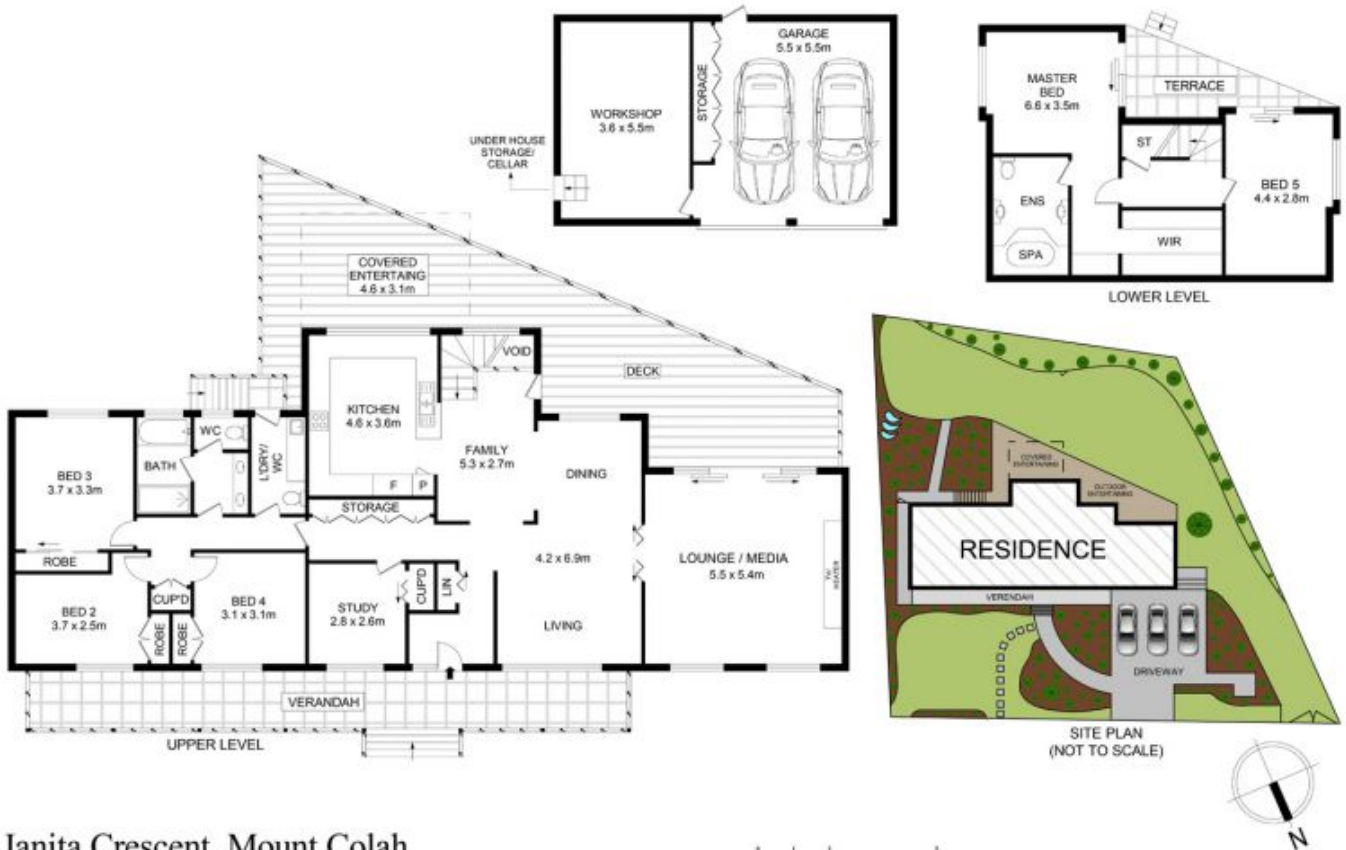
Marcus Bentivoglio
(02) 4504 8004



Anthony Chau
(02) 4504 8004

<https://www.saliba.com.au>

SALIBA



1 Janita Crescent, Mount Colah

Disclaimer- Floor Plan measurements are approximate and are for illustrative purposes only. While we cannot doubt the floor plans accuracy, we make no guarantee, warranty or representation as to the accuracy and completeness of the floor plan

TOTAL AREA OF LAND : 1017 SQM
 TOTAL RESIDENCE AREA : 295 SQM