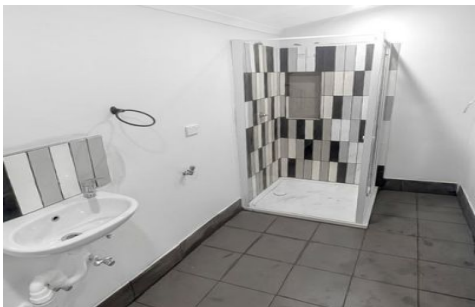


SALIBA



2/801 Pacific Highway Mount Kuring-gai NSW

1  1  1 

We invite you to inspect our new rental listing.

Property Features:

- Freshly Painted
- Brand New Wooden Flooring Throughout
- Fully Renovated Bathroom
- Portable Electric Oven and Cooktop Combo
- Small Fridge and Microwave
- Water Usage and Lawn Maintenance Include

Property facts:

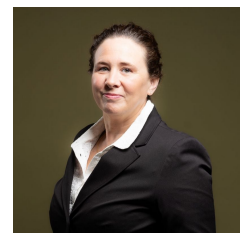
- Preferred minimum lease term: 12 months
- Pets allowed: Considered Upon Application
- Storage Available: No

Type : Unit

View : <https://www.saliba.com.au/2801-pacific-highway-mount-kuringgai-nsw-8338399/>



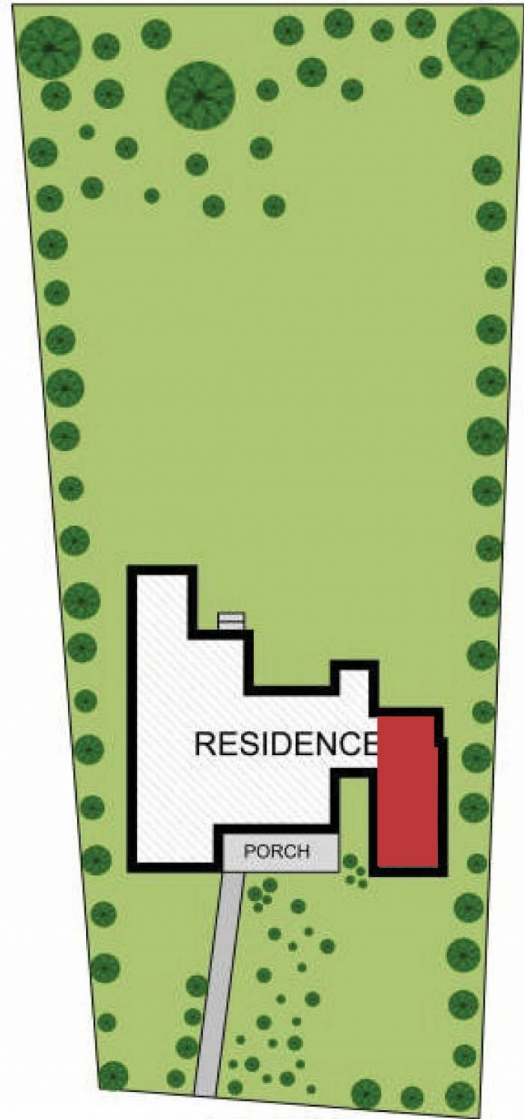
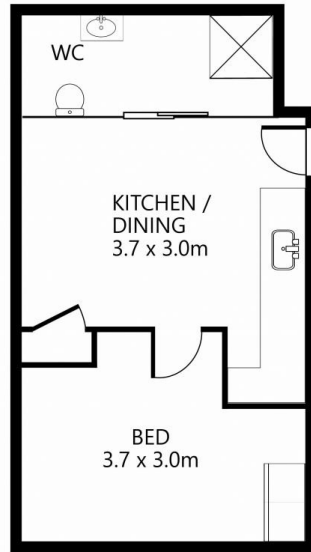
Tarik Goktas
(02) 4504 8004



Rebecca Lumbroso
(02) 4504 8004

[For full version visit the website](https://www.saliba.com.au)

<https://www.saliba.com.au>



SITE PLAN
(NOT TO SCALE)

2/801 Pacific Highway, Mount Kuring-Gai

Disclaimer - Floor plan measurements are approximate and for illustrative purposes only.