

# SALIBA



106A Dartford Road Thornleigh NSW

5 3 2

This beautifully designed residence offers multiple living spaces, a stylish open-plan kitchen with a butler's pantry, and a seamless flow to a covered alfresco area. With a private master retreat, generous bedrooms, and a well-landscaped outdoor setting, it delivers comfort and modern elegance in a prime location.

**Type** : House  
**Price** : Contact Agent  
**Land Size** : 600 sqm  
**View** : <https://www.saliba.com.au/106a-dartford-road-thornleigh-nsw-8311107/>

Internal Features:

- A designer inspired open-plan kitchen, complete with a butler's pantry and 40mm Caesarstone benchtop
- Multiple living spaces, including a cosy lounge, a spacious dining area, and a versatile rumpus room.
- A private master retreat featuring a walk-in robe and an elegant ensuite.
- Additional bedrooms with built-in robes, offering ample

[For full version visit the website](https://www.saliba.com.au)



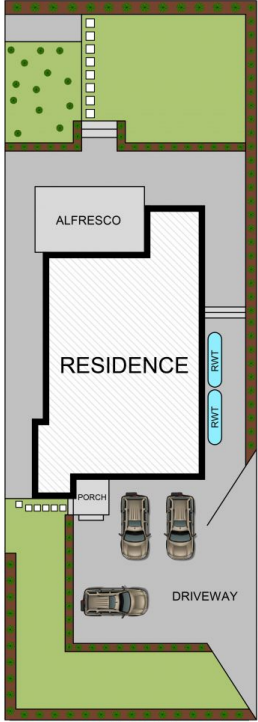
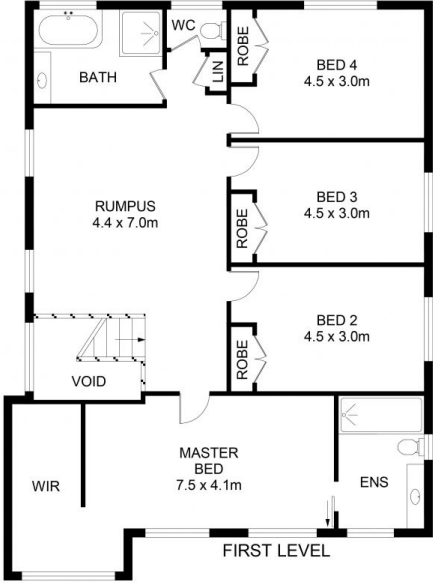
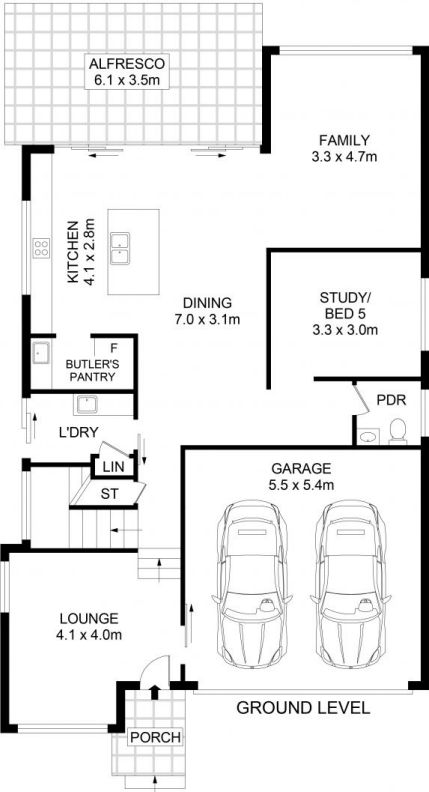
**Josh Saliba**  
(02) 4504 8004



**David Kim**  
(02) 4504 8004

<https://www.saliba.com.au>

# SALIBA



106A Dartford Road, Thornleigh



Disclaimer- Floor Plan measurements are approximate and are for illustrative purposes only. While we cannot doubt the floor plans accuracy, we make no guarantee, warranty or representation as to the accuracy and completeness of the floor plan



TOTAL AREA : 278 SQM