

SALIBA



8/131-133 Jersey Street North Asquith NSW

2  2  1 

This modern apartment offers spacious open-plan living with a large balcony, perfect for outdoor entertaining and relaxation. Ideally located close to public transport and local amenities, it provides both convenience and a comfortable, stylish lifestyle.

Internal Features:

- A generously sized open-plan living and dining area, flowing seamlessly into the spacious balcony for relaxed indoor-outdoor living.
- Modern kitchen equipped with quality appliances and a practical layout that maximises space and efficiency.
- Master bedroom with a walk-in robe and a private ensuite, offering comfort and privacy.
- Second bedroom features a built-in wardrobe, providing

[For full version visit the website](https://www.saliba.com.au)

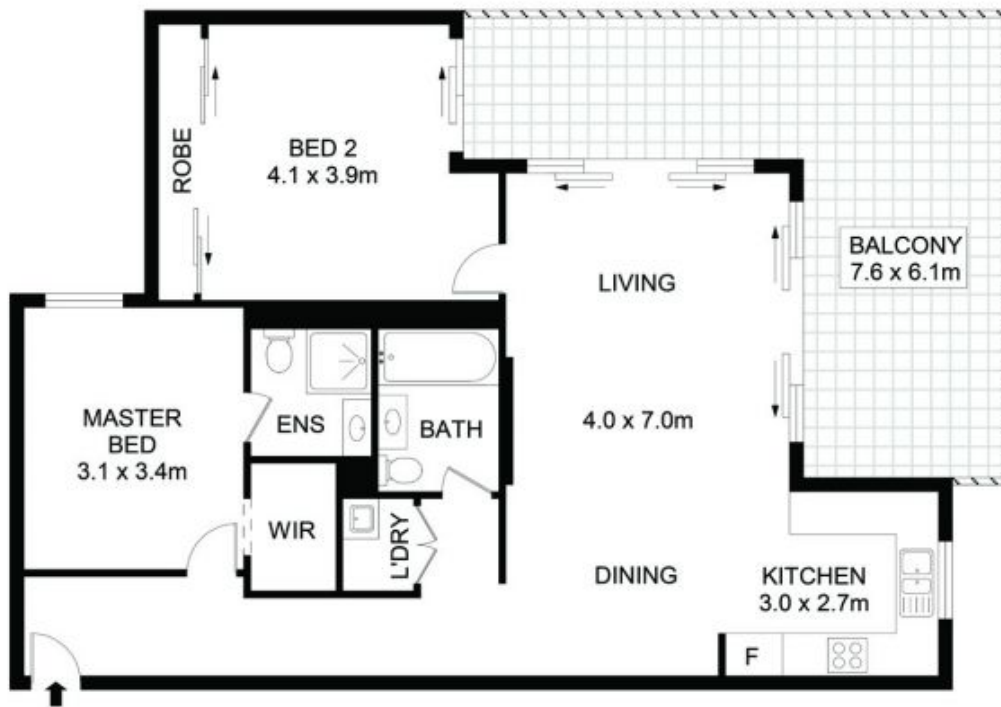
Type : Unit
Price : \$ 676,000
Building Size : 128 sqm
View : <https://www.saliba.com.au/8131133-jersey-street-north-asquith-nsw-8156172/>



Anthony Chau
(02) 4504 8004



Iain Rosekilly
(02) 4504 8004



ST
2 sqm



8/131-133 Jersey Street North, Asquith



Disclaimer- Floor Plan measurements are approximate and are for illustrative purposes only. While we cannot doubt the floor plans accuracy, we make no guarantee, warranty or representation as to the accuracy and completeness of the floor plan



TOTAL AREA ~ 130 SQM