

SALIBA



11/2A Yardley Avenue Waitara NSW

2  1  1 

This bright and stylish apartment offers modern living with a spacious bedroom, sleek kitchen, and a private balcony overlooking lush surroundings. Residents will enjoy the added luxury of a communal swimming pool and secure, well-maintained facilities for a relaxed lifestyle.

Type : Unit
Price : \$ 615,000
Building Size : 95 sqm
View : <https://www.saliba.com.au/112a-yardley-avenue-waitara-nsw-8152240/>

Internal Features:

- Spacious and light-filled bedroom with direct access to a private balcony, perfect for fresh air and relaxation.
- Modern kitchen with sleek cabinetry, stainless steel appliances, and a vibrant splashback that adds a touch of style.
- Open-plan living area with large windows that invite an abundance of natural light, creating a warm and welcoming atmosphere.

[For full version visit the website](#)

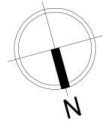
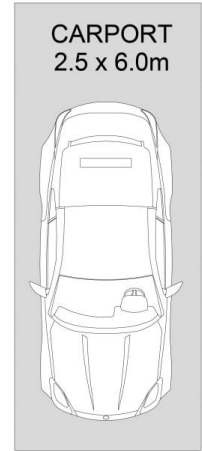
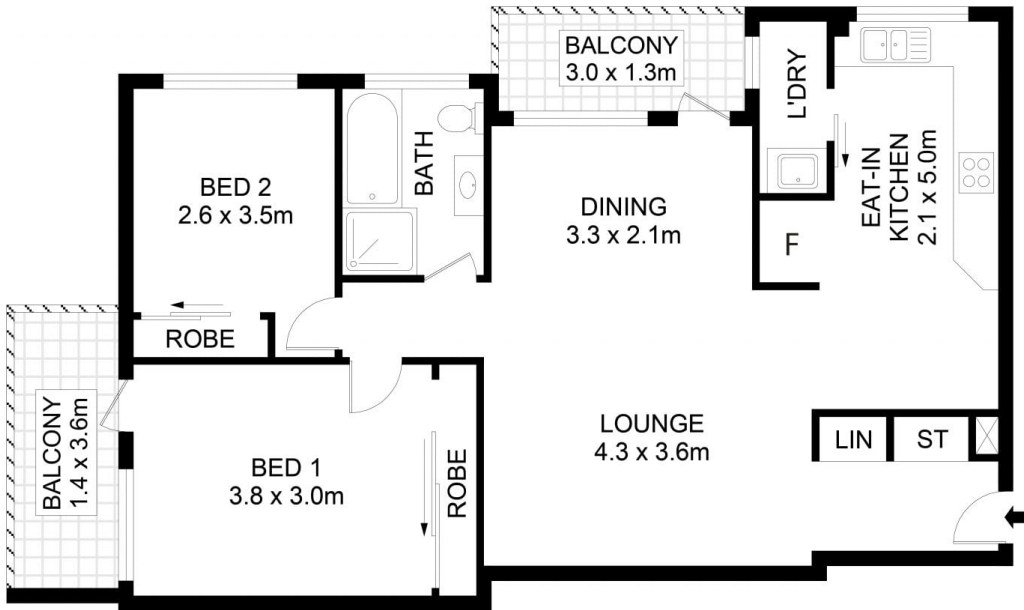


Josh Saliba
(02) 4504 8004



Manas Bargoti
(02) 4504 8004

<https://www.saliba.com.au>



11/2A Yardley Ave, Waitara



Disclaimer- Floor Plan measurements are approximate and are for illustrative purposes only. While we cannot doubt the floor plans accuracy, we make no guarantee, warranty or representation as to the accuracy and completeness of the floor plan

TOTAL AREA : 102 SQM