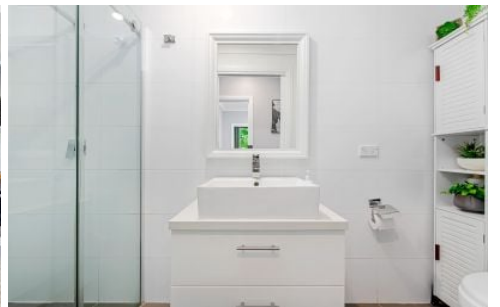


# SALIBA



## 2/64 The Esplanade Thornleigh NSW

2 1 1

Experience the pinnacle of contemporary comfort and sophistication in this exceptional two-bedroom home, where every detail has been meticulously crafted to elevate your living experience.

### Internal Features

- Generously proportioned connecting living and dining area
- Seamlessly blend indoor and outdoor living with sliding doors.
- Split system air conditioner.
- Enhance the aesthetic appeal of the interior with stylish yet low-maintenance floorboards.
- Enjoy the comfort and convenience of two bedrooms featuring built-in robes, with the master bedroom offering

**Type** : Unit  
**Price** : \$ 750,000

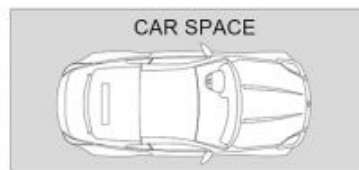
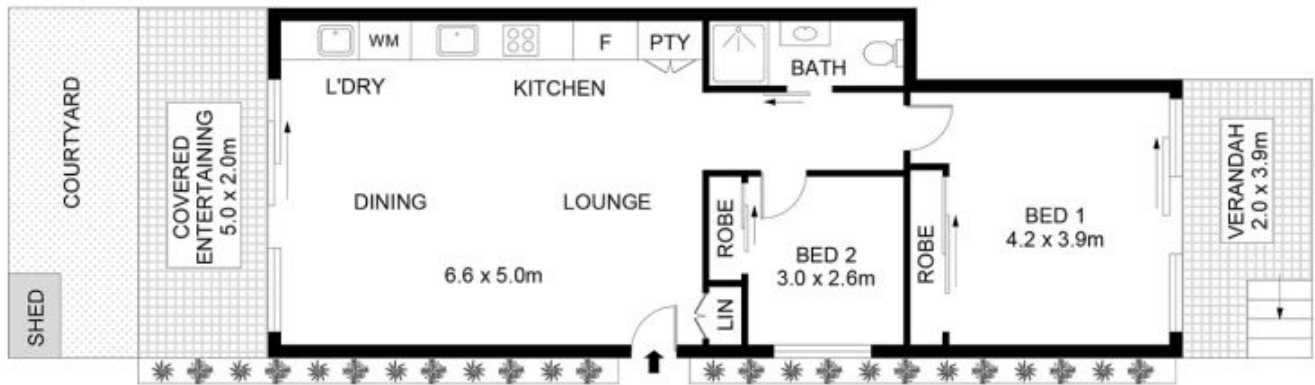
**View** : <https://www.saliba.com.au/264-the-esplanade-thornleigh-nsw-8010710/>



**Josh Saliba**  
**(02) 4504 8004**

[For full version visit the website](https://www.saliba.com.au)

<https://www.saliba.com.au>



## 2/64 The Esplanade, Thornleigh



Disclaimer- Floor Plan measurements are approximate and are for illustrative purposes only. While we cannot doubt the floor plans accuracy, we make no guarantee, warranty or representation as to the accuracy and completeness of the floor plan.



INTERNAL AREA - 82 SQM