

SALIBA



11 Claridge Close Cherrybrook NSW

5 🛏 2 🚿 3 🚗

Nestled away from the peaceful Claridge Close, relish in the serene and chic lifestyle offered by this architecturally designed spacious family home. Upon entering through the double front doors from the outdoor porch, you're greeted by lofty ceilings and expansive living spaces.

Type : House

View : <https://www.saliba.com.au/11-claridge-close-cherrybrook-nsw-7983328/>

Internal Features

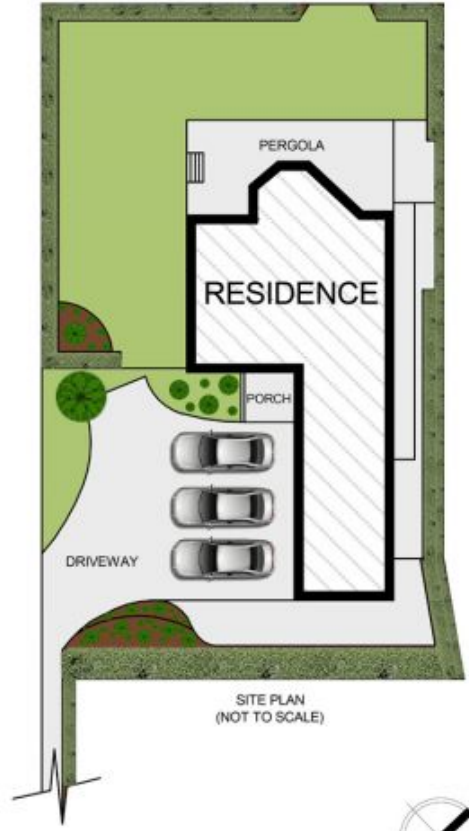
- Combined living and dining area, supplemented by 2 additional living areas and a separate formal dining room.
- Internal laundry room included.
- Additional storage strategically placed throughout the home.
- Enjoy the convenience of a stone benchtop and ample cabinet space in the kitchen.
- Upstairs, four generously sized bedrooms await,



Josh Saliba
(02) 4504 8004

[For full version visit the website](https://www.saliba.com.au)

<https://www.saliba.com.au>



11 Claridge Close, Cherrybrook

Disclaimer- Floor Plan measurements are approximate and are for illustrative purposes only. While we cannot doubt the floor plans accuracy, we make no guarantee, warranty or representation as to the accuracy and completeness of the floor plan

INTERNAL AREA :- 283 SQM