

SALIBA



84 Mount Pleasant Avenue Wahroonga NSW

4  2  2 

Come and take a look at this beautiful property with a peaceful bushland outlook! Closely located to Sydney Adventist Hospital, Loreto and Normanhurst Station, you have everything right around the corner.

- Large modern kitchen with plenty of bench space, and stainless steel appliances.
- Multiple large living areas, perfect for larger families or entertaining.
- Carpeted lounge area for added comfort
- Split system air conditioning.
- Four bedrooms with three that feature in built robes, and one being able to be converted to a home office.

Type : House

Price : \$ 1,865,000

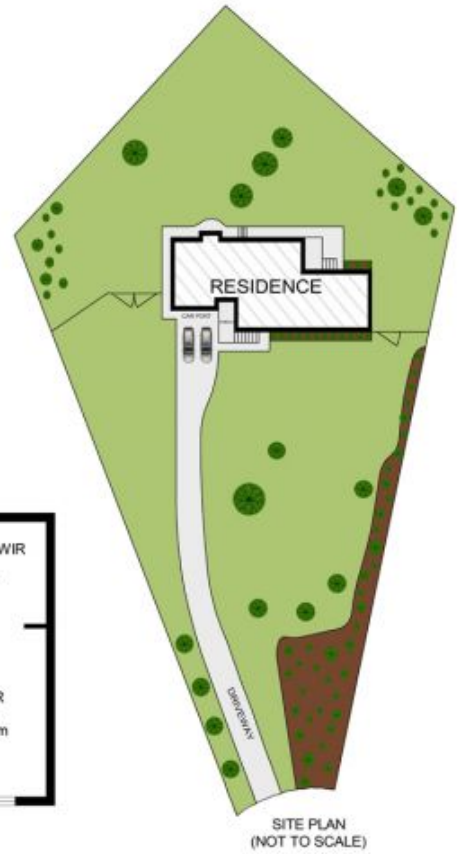
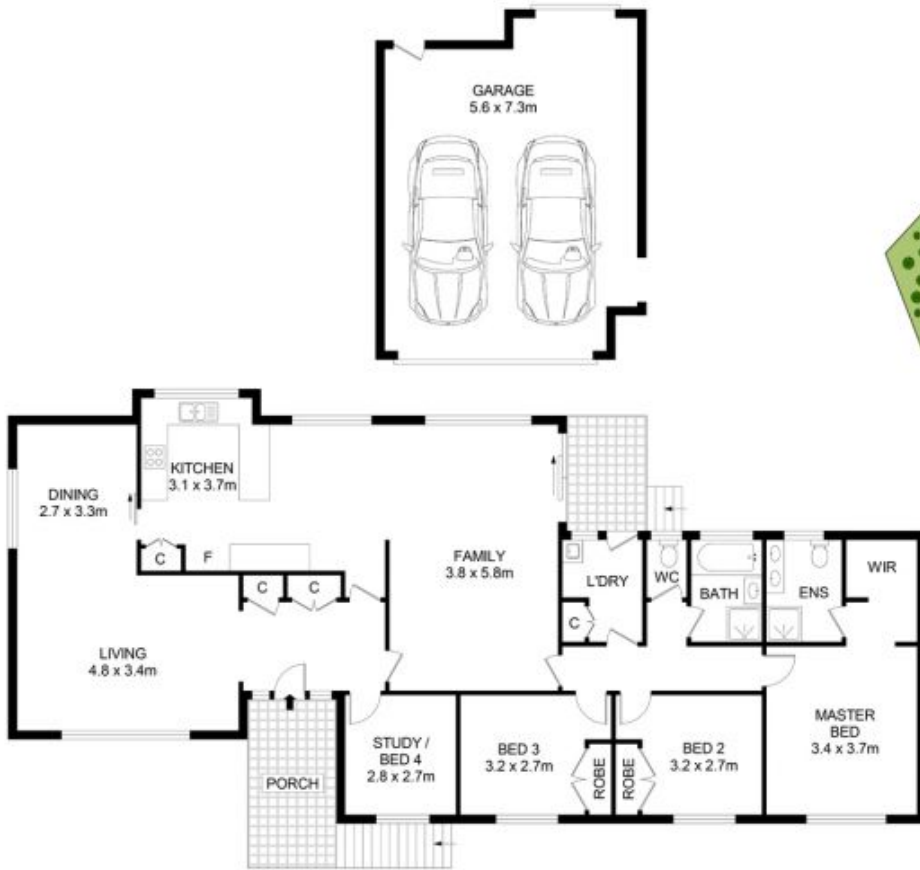
View : <https://www.saliba.com.au/84-mount-pleasant-avenue-wahroonga-nsw-7817993/>



Josh Saliba
(02) 4504 8004

[For full version visit the website](https://www.saliba.com.au)

<https://www.saliba.com.au>



84 Mount Pleasant Ave, Wahroonga

Disclaimer- Floor Plan measurements are approximate and are for illustrative purposes only. While we cannot doubt the floor plans accuracy, we make no guarantee, warranty or representation as to the accuracy and completeness of the floor plan



LAND SIZE :- 1250 SQM
INTERNAL AREA :- 156 SQM