

SALIBA



12/29 Sherbrook Road Hornsby NSW

2  **1**  **1** 

Welcome to this incredible unit located on the top floor of a secure block! With meticulous attention to detail and an emphasis on comfort, every corner of this space has been thoughtfully curated to provide a truly elevated living experience.

- Short distance to recreational areas such as Holman Park and Neal Park
- Located close by to bus stops and Hornsby Hospital
- Secure intercom
- Tiled entry
- Wool carpets
- Open living and dining area with sliding door access to balcony
- Kitchen has quality appliances featuring a large granite

Type : Unit

View : <https://www.saliba.com.au/1229-sherbrook-road-hornsby-nsw-7692017/>



Angelina Sekulić
02 4504 8004

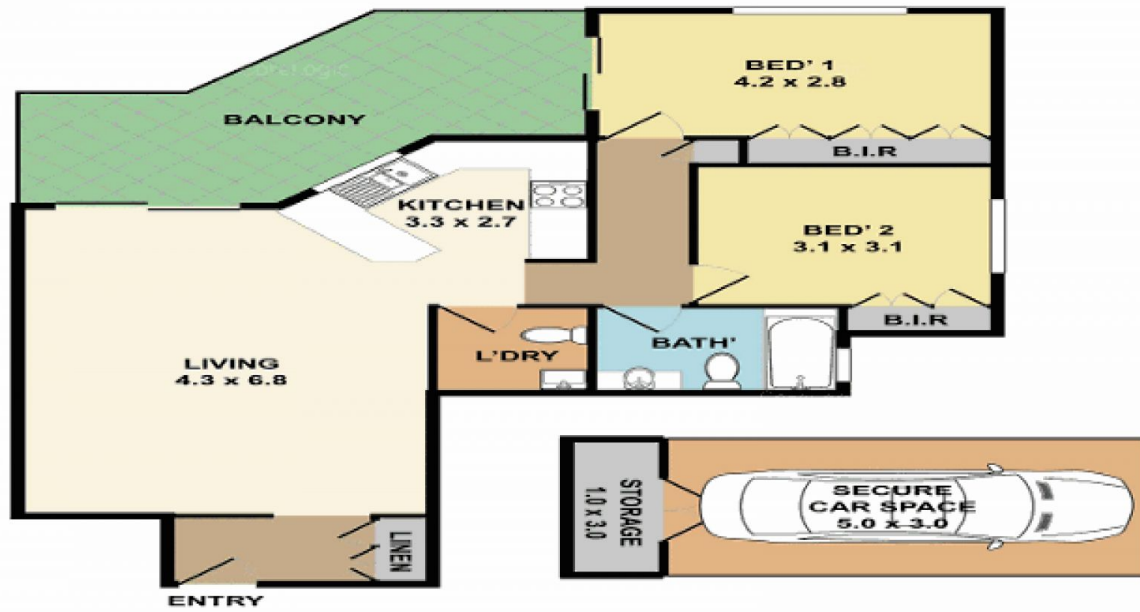
[For full version visit the website](https://www.saliba.com.au)

<https://www.saliba.com.au>

12 / 29-31 Sherbrook Rd, Hornsby



Measurements are approximate and not to scale
Illustrative and promotional purposes only
Open 2 View does not accept responsibility for any information supplied



Sep 22

 CoreLogic