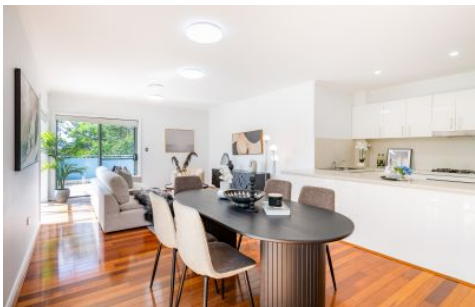


SALIBA



35/1689 Pacific Highway Wahroonga NSW

3 2 2

Nestled among the treetops with a light-filled northwest aspect, this spacious apartment offers a relaxed living experience, effortless entertaining, and convenient amenities in the heart of Wahroonga. Elevated within a modern security complex, the property features impressive open plan living and dining areas that seamlessly flow onto expansive wraparound terraces, perfect for outdoor play, entertaining, or simply enjoying the surroundings. With three bedrooms, dual security parking, and proximity to schools, public transport, and local amenities, this apartment presents a fantastic alternative to traditional house buying.

- Modern security complex with convenient access via Bundarra Avenue South.

[For full version visit the website](#)

Type : Unit
Building Size : 102 sqm
View : <https://www.saliba.com.au/351689-pacific-highway-wahroonga-nsw-7626609/>



Lucy Hewitt
(02) 4504 8004

<https://www.saliba.com.au>

SALIBA

Estate Agents



WAHROONGA
35/1689-1693 PACIFIC HIGHWAY

*INTERNAL FLOOR AREA Incl. BALCONY APPROX 147 sqm
*TOTAL AREA APPROX 198 sqm