

SALIBA



50/2-4 Lodge Street Hornsby NSW

2  2  1 

Welcome to the epitome of luxury living in Hornsby, where elegance meets convenience. Nestled in an idyllic location, this exquisite apartment showcases the perfect blend of opulence and practicality.

Situated in the heart of Hornsby, this prestigious residence offers a remarkable array of amenities and an unparalleled lifestyle experience. Whether you seek easy access to transportation, proximity to premier shopping destinations, or a serene escape from the bustling city, this luxury apartment is designed to exceed your every expectation.

Additional Features:

- * North Facing aspect
- * Convenient Location with access to Storey park oval and

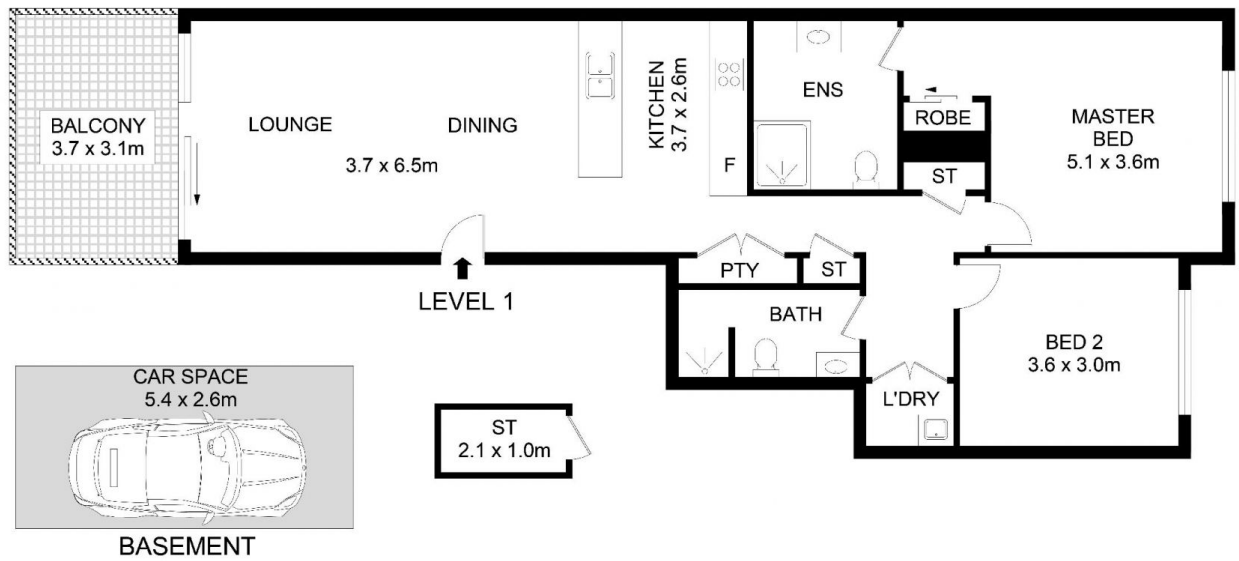
Type : Unit
Price : \$ 725,000
View : <https://www.saliba.com.au/5024-lodge-street-hornsby-nsw-7616151/>



Josh Saliba
(02) 4504 8004

[For full version visit the website](https://www.saliba.com.au)

<https://www.saliba.com.au>



50/2 Lodge St, Hornsby



INTERNAL AREA - 95 SQM
TOTAL AREA - 111 SQM

Disclaimer- Floor Plan measurements are approximate and are for illustrative purposes only. While we cannot doubt the floor plans accuracy, we make no guarantee, warranty or representation as to the accuracy and completeness of the floor plan