

SALIBA



70 Mount Pleasant Avenue Wahroonga NSW

4 1 2

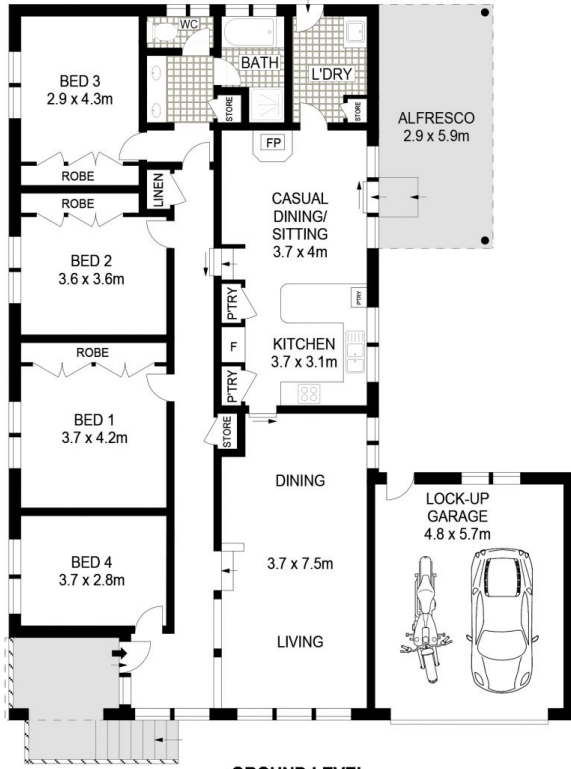
Taking pride-of-place high-side in a quiet no through pocket, this striking home provides architectural appeal with its split level floor plan and soaring vaulted ceilings. North to rear on its superb 941sqm block, it backs directly onto greenspace and overlooks the adjacent lush reserve. Well-presented interiors provide instant appeal to a floorplan that is spacious with reverse cycle air conditioning that cools in summer and an ambient slow combustion fireplace for winter comfort in the family room. Step straight out to the substantial covered terrace and the fully fenced child friendly back lawn and garden. Numerous schools are in easy reach from this desirable address along with bus services, the station and village hub.

Type : House
Land Size : 941 sqm
View : <https://www.saliba.com.au/70-mount-pleasant-avenue-wahroonga-nsw-7416563/>

- Striking architectural lines, split level, vaulted ceiling

[For full version visit the website](https://www.saliba.com.au)

<https://www.saliba.com.au>



GROUND LEVEL



SITE PLAN

Dimensions are approximate. All information contained is gathered from sources we believe to be reliable. However we cannot guarantee its accuracy and interested persons should rely on their own enquiries.
www.visiorphoto.com.au

70 MOUNT PLEASANT AVENUE, WAHROONGA

APPROX. INTERNAL FLOOR AREA: 178 SQM

