

# SALIBA



52/4-6a Park Avenue Waitara NSW

2  2  1 

This modern, refreshed property is perfect for young families, downsizers and investors alike. The quality home is ideally located in a family-friendly neighbourhood close to public transport, Hornsby Westfield, hospital, community facilities, and sought-after schools.

- Positioned on level one with generous well laid out floorplan and high ceilings
- Substantial alfresco balcony
- Quality stone topped gas kitchen with breakfast bar and ample storage
- Contemporary full main bathroom with bathtub and floor-to-ceiling tiles
- New paint and floating floors recently installed throughout
- Spacious air-conditioned living area

[For full version visit the website](https://www.saliba.com.au)

**Type** : Unit  
**Price** : \$ 760,000  
**Building Size** : 102 sqm  
**View** : <https://www.saliba.com.au/5246a-park-avenue-waitara-nsw-7241583/>

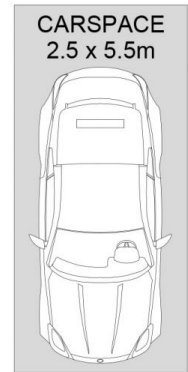
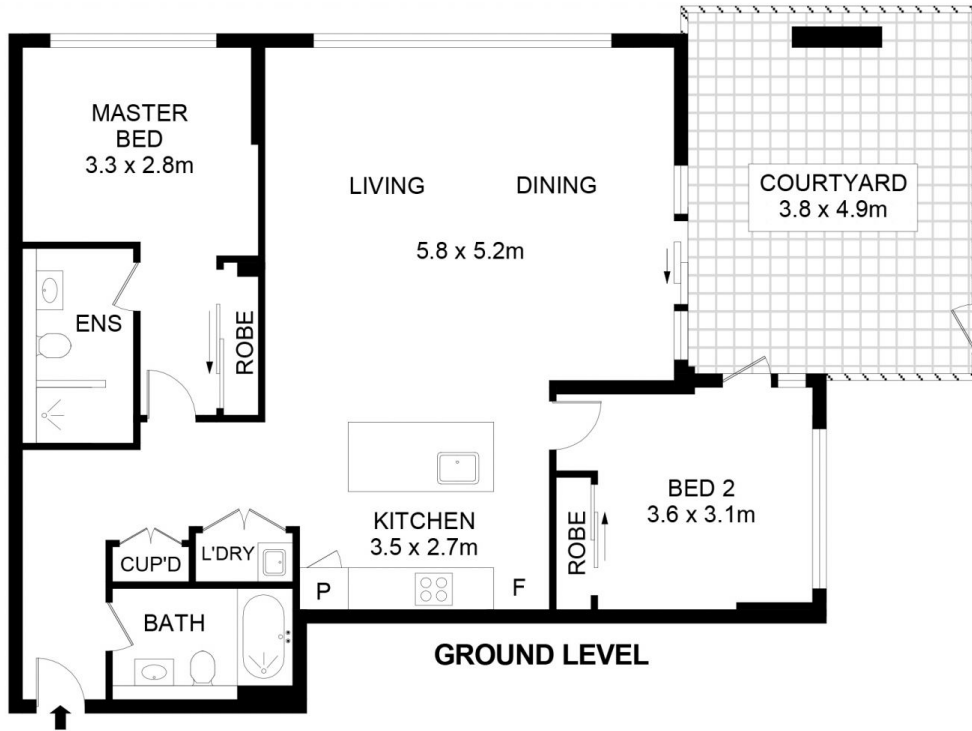


Iain Rosekilly  
(02) 4504 8004

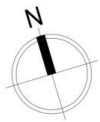
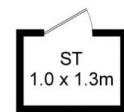


Josh Saliba  
(02) 4504 8004

<https://www.saliba.com.au>



**BASEMENT 1**



52/4-6A Park Ave, Waitara



Disclaimer- Floor Plan measurements are approximate and are for illustrative purposes only. While we cannot doubt the floor plans accuracy, we make no guarantee, warranty or representation as to the accuracy and completeness of the floor plan

INTERNAL AREA :- 107 SQM