

SALIBA



21/16-18 Nelson Street Thornleigh NSW

3  2  2 

A leafy entry into the peaceful 'Woodlands' complex provides a lovely introduction to this dual level townhouse. Privately set to the rear and raised on the high side, its deceptively generous layout is enhanced by a secure rear courtyard screened by lush gardens, as well as a desirable address with easy access to buses, Thornleigh/ Normanhurst Train Station, parks, local shops and some of Sydney's most prestigious schools.

- Double brick townhouse with tandem lock up garage
- Private outdoor courtyard which is perfect for children and families
- Large combined lounge/meals opening to outdoor dining
- Updated with timber floors and split system air conditioning

Type : Unit

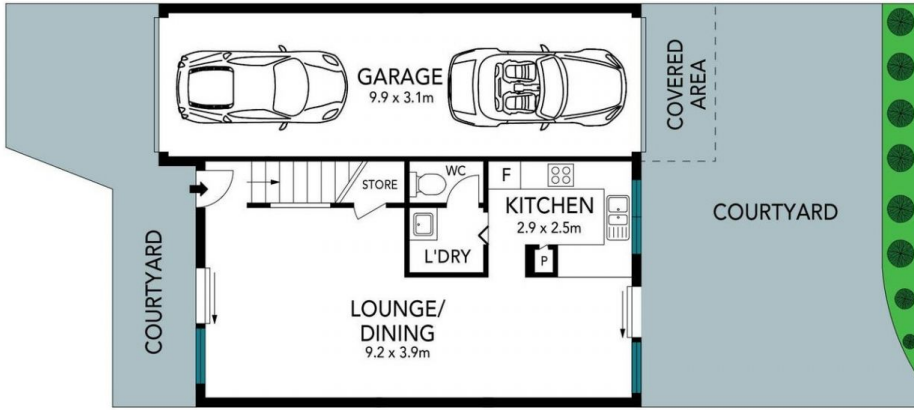
View : <https://www.saliba.com.au/211618-nelson-street-tornleigh-nsw-7181103/>



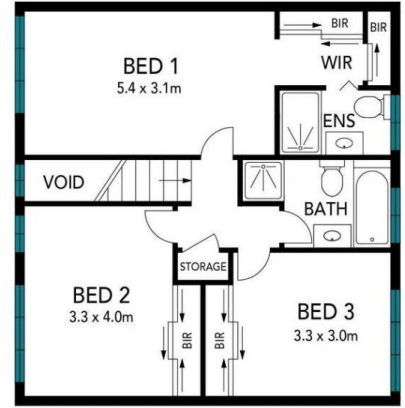
Angelina Sekulić
02 4504 8004

[For full version visit the website](https://www.saliba.com.au)

<https://www.saliba.com.au>



GROUND FLOOR



FIRST FLOOR

The floor plan is not to scale; measurements are indicative and in metres. Exterior elements are not in position. Plans should not be relied on. Interested parties should make and rely on their own enquiries.

