

SALIBA



35 Waremba Avenue Thornleigh NSW

4 🚗 3 🚗 2 🚗

Enjoying a prime position on a blissfully quiet street, this home has been meticulously renovated to create a space of luxury and contemporary comfort. This stunning residence boasts an expansive floorplan that offers plenty of space for an array of families, capturing ample natural light and offering an easy maintenance front and rear garden. Situated a short and easy drive from all there is to love about Thornleigh, including multiple shops, amenities, restaurants, transport options and schooling.

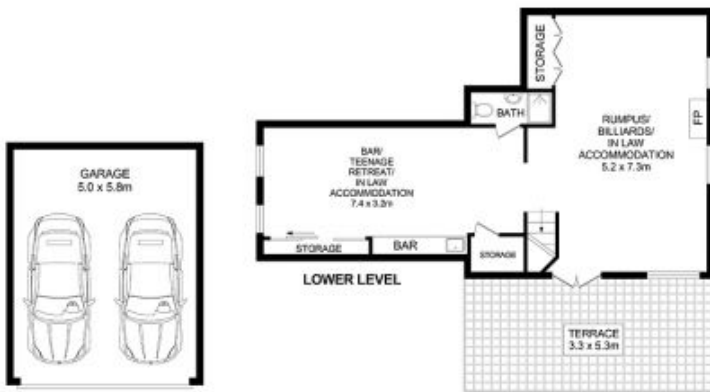
Type : House

View : <https://www.saliba.com.au/35-waremba-avenue-thornleigh-nsw-7178051/>

- Three bedrooms, main with ensuite
- Main bed with walk in robe, built ins to other bedrooms
- Versatile floorplan with multiple living arrangements
- Formal lounge, downstairs rumpus, separate study
- Kitchen with stainless steel appliances and skylight

[For full version visit the website](https://www.saliba.com.au)

<https://www.saliba.com.au>



35 Waremba Ave, Thornleigh



Disclaimer- Floor Plan measurements are approximate and are for illustrative purposes only. While we cannot doubt the floor plans accuracy, we make no guarantee, warranty or representation as to the accuracy and completeness of the floor plan.

