

SALIBA



35 Larool Crescent Thornleigh NSW

4 🚗 3 🚗 2 🚗

North facing family residence in a peaceful and quiet street. This home is ready to move in and enjoy. Generous bedrooms all with built in robes, separate living and dining areas, modern, renovated kitchen. Sunroom with french doors flowing to a new covered entertainment deck.

Separate access to the DA approved granny flat for either the in-law's, teenager or potential rental income with separate electricity meter.

Conveniently located just moments from Westleigh Village which includes supermarkets, specialty shops, cafes, restaurants and a gym. School catchments are Normanhurst West Public School and Turramurra High School. Also in close proximity to Hornsby Girls,

Type : House
Land Size : 746.1 sqm
View : <https://www.saliba.com.au/35-larool-crescent-thornleigh-nsw-7086362/>



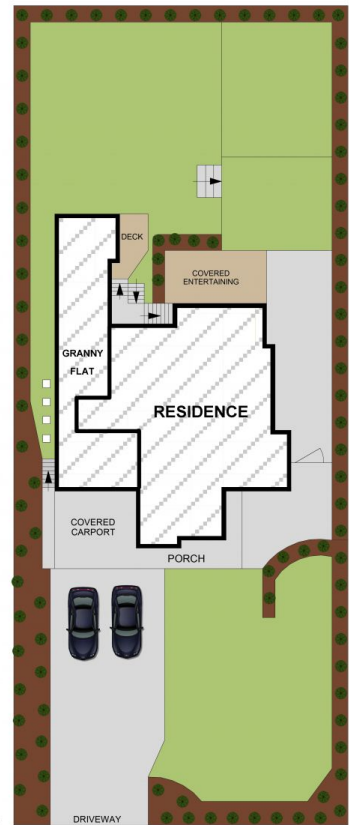
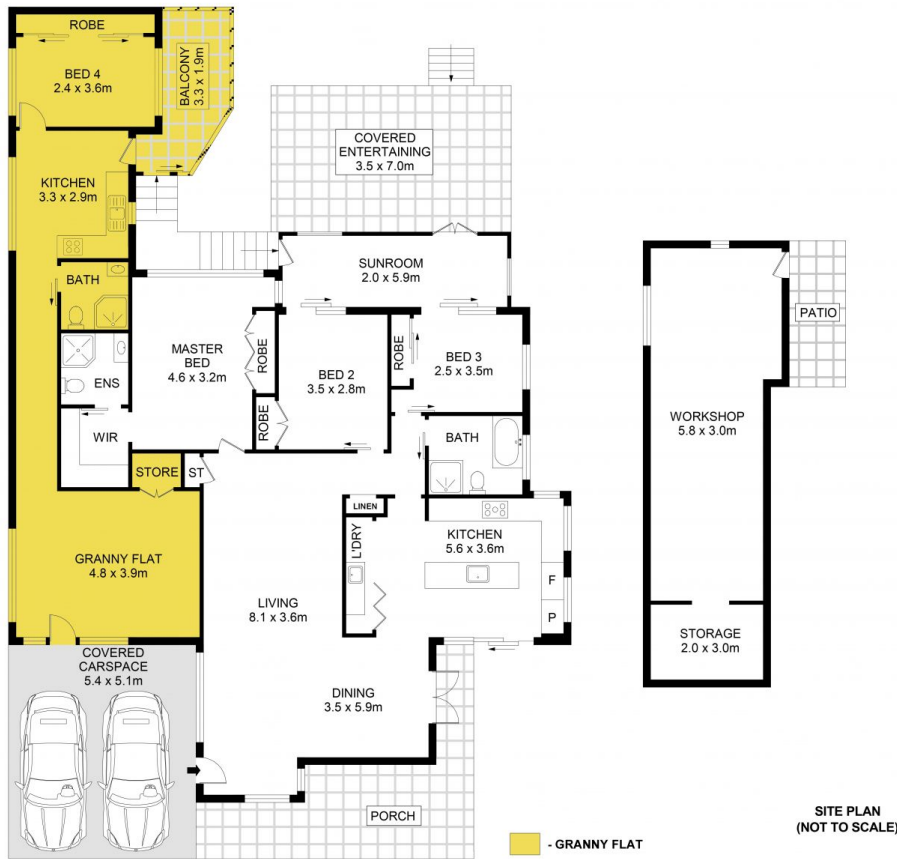
Josh Saliba
(02) 4504 8004



Iain Rosekilly
(02) 4504 8004

[For full version visit the website](https://www.saliba.com.au)

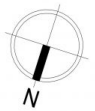
<https://www.saliba.com.au>



35 Larool Crescent, Thornleigh



Disclaimer- Floor Plan measurements are approximate and are for illustrative purposes only. While we cannot doubt the floor plans accuracy, we make no guarantee, warranty or representation as to the accuracy and completeness of the floor plan



INTERNAL AREA :- 235 SQM