

SALIBA



153/107-115 Pacific Highway Hornsby NSW

1  1  1 

Situated on the ground floor of the popular Jubilee Towers complex this large one bedroom apartment boasts the perfect location, only moments to schools, shops and transport. Jubilee Towers offer its residents facilities including an indoor swimming pool, spa, sauna and gym as well as an onsite building manager and security.

Type : Unit

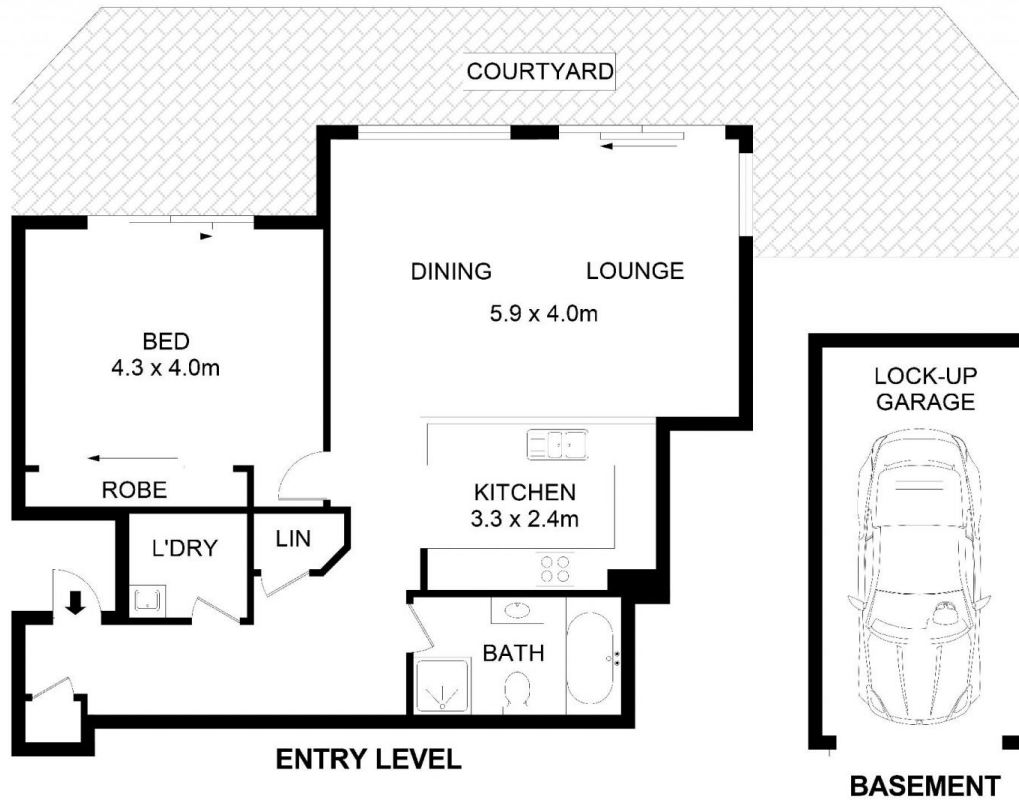
View : <https://www.saliba.com.au/153107115-pacific-hig-hway-hornsby-nsw-7042580/>

All the above is within walking distance of both Hornsby and Waitara railway station, Hornsby Westfield shopping centre with its many cafes and restaurants as well as some of the regions best schools.

- Fresh carpet throughout
- One large bedroom with built-in robe
- Spacious living and dining area

[For full version visit the website](#)

<https://www.saliba.com.au>



153, 107 Pacific Highway, Hornsby

Disclaimer- Floor Plan measurements are approximate and are for illustrative purposes only. While we cannot doubt the floor plans accuracy, we make no guarantee, warranty or representation as to the accuracy and completeness of the floor plan

INTERNAL AREA :- 117 SQM