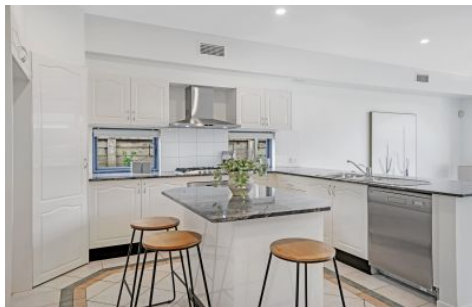





SALIBA



6 Zulfi Close Cherrybrook NSW

5  3  2 

A true celebration of space and style, this family residence offers an abundance of space and excellent convenience. Located at the end of the close it offers a great street presence. On entry a 5th or guest bedroom, bathroom flowing to numerous breakout spaces including formal dining, lounge, eat in kitchen and family room with high ceilings and a plethora of light. The multiple formal and informal spaces on offer meet the needs of a young family or teenagers. The lounge area is a beautiful room for all year round. Built in fireplace for those winter evenings also flows to the covered entertainment area for the beautiful summer days with friends and family overlooking the sparkling the pool.

On the upper level the grand master suite is a true

[For full version visit the website](https://www.saliba.com.au/6-zulfi-close-cherrybrook-nsw-6995575/)

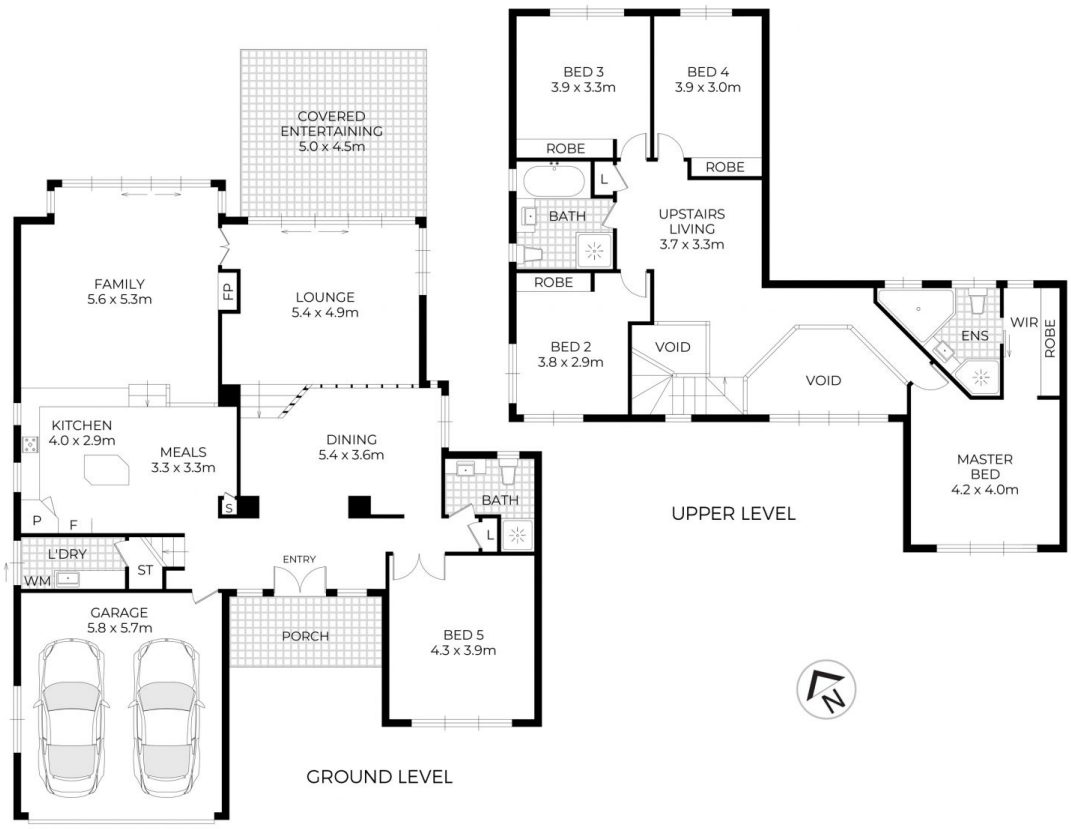
Type : House
Price : \$ 2,720,000
Land Size : 777.5 sqm
View : <https://www.saliba.com.au/6-zulfi-close-cherrybrook-nsw-6995575/>



Josh Saliba
(02) 4504 8004



Iain Rosekilly
(02) 4504 8004



6 Zulfi Close Cherrybrook

TOTAL INTERNAL AREA: 247 SQM (APPROX.)

DISCLAIMER

DIMENSIONS ARE APPROXIMATE AND SHOULD ONLY BE USED AS A GUIDE
THEY ARE NOT TO SCALE AND NO LIABILITY BE ACCEPTED