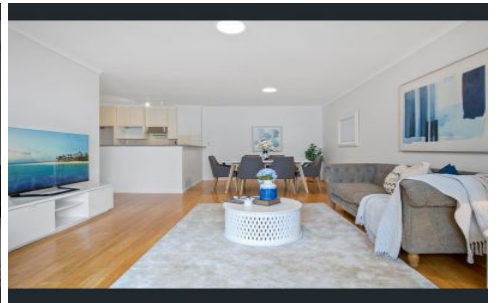
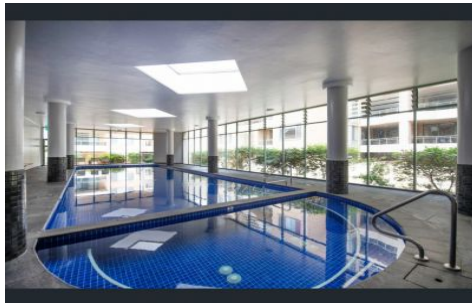
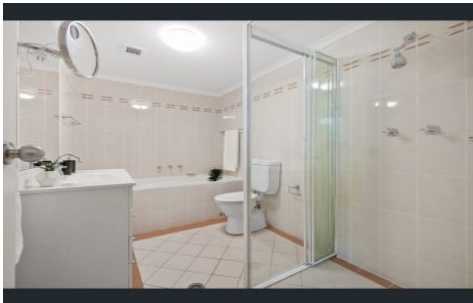
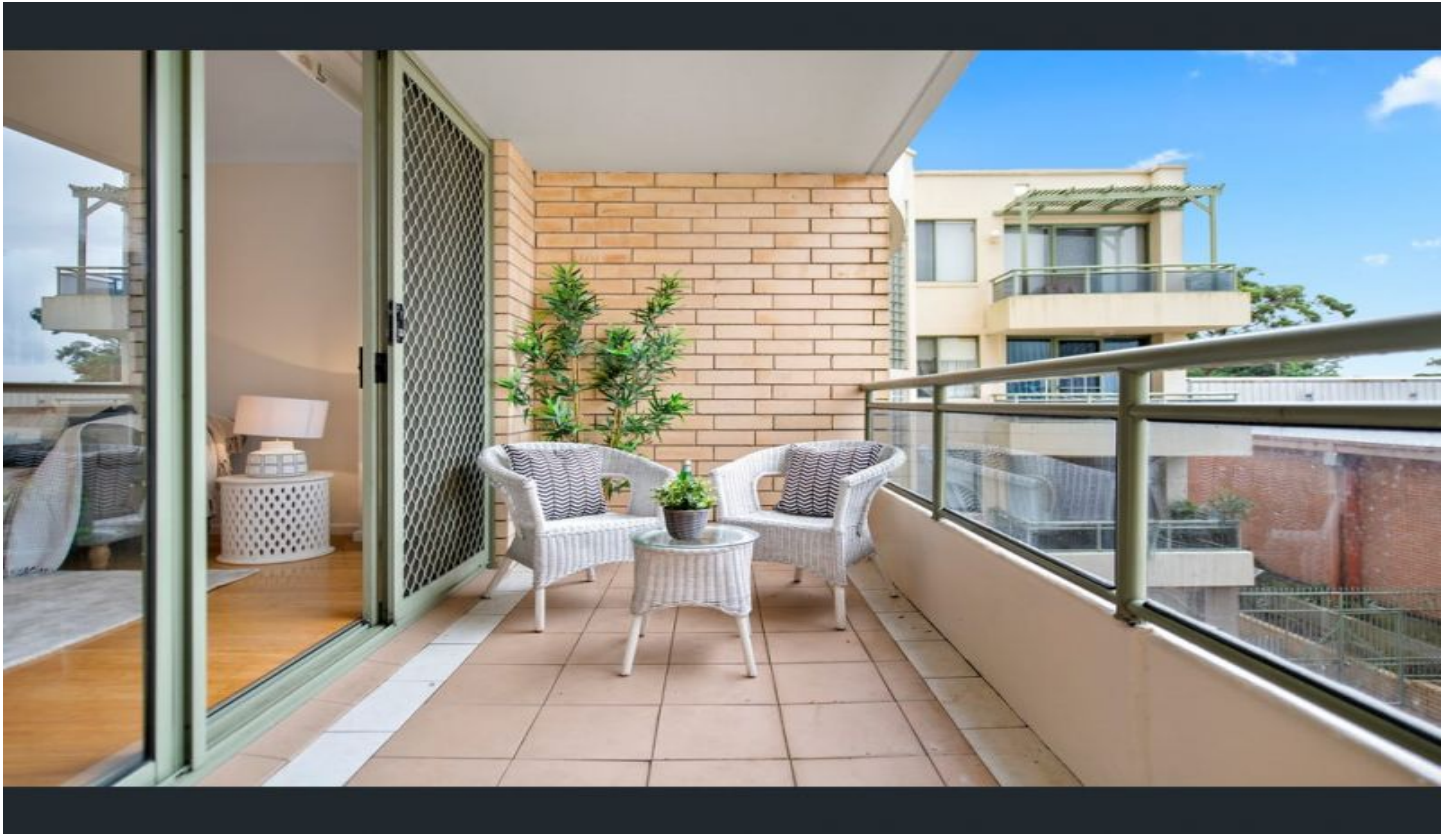


# SALIBA



33/107-115 Pacific Highway Hornsby NSW

2 🛏 2 🚿 1 🚗

Located within a quiet back of block setting, 6th floor elevation and over-sized floor plan, this property sets the scene for an exceptional lifestyle footsteps to the village hub, Hornsby station, Westfield and quality schools. Refreshed interiors are immediately welcoming displaying an excellent design and generous proportions throughout. Open plan living spaces promote easy comfort extending to the equally spacious alfresco balcony. Positioned in 'Jubilee Towers' one of the area's most popular buildings, residents benefit from a recently renovated indoor pool, spa, sauna, gymnasium and building caretaker. Secure intercom entry, lift access and a lock up garage are further desirable features. This fantastic opportunity is ideal for those looking for a spacious, quiet retreat steps to all the action.

**Type** : Unit  
**Building Size** : 94 sqm  
**Land Size** : 7209 sqm  
**View** : <https://www.saliba.com.au/33107115-pacific-highway-hornsby-nsw-6955473/>



**Jacqui Gaut**  
(02) 4504 8004

[For full version visit the website](https://www.saliba.com.au)

<https://www.saliba.com.au>



Dimensions are approximate. All information contained is gathered from sources we believe to be reliable. However we cannot guarantee its accuracy and interested persons should rely on their own enquiries.



33/107-115 PACIFIC HIGHWAY, HORNSBY