

# SALIBA



40 Malsbury Road Normanhurst NSW

4  2  2 

Built circa 1900, this single level Victorian/Federation style home won the Hornsby Heritage Award for Conservation in 1997. This home offers all the character features you would expect in a home built in this era in a blue ribbon location.

Offering four bedrooms, a large main bathroom with classic claw foot freestanding bath and separate shower. Formal lounge with fireplace, high ceilings, polished wooden floors throughout and a large wrap around verandah. There is a separate dining room and a casual family room flowing to the undercover verandah overlooking the established manicured gardens.

Other features include:

**Type** : House  
**Land Size** : 695.6 sqm  
**View** : <https://www.saliba.com.au/40-malsbury-road-normanhurst-nsw-6922395/>



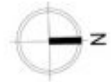
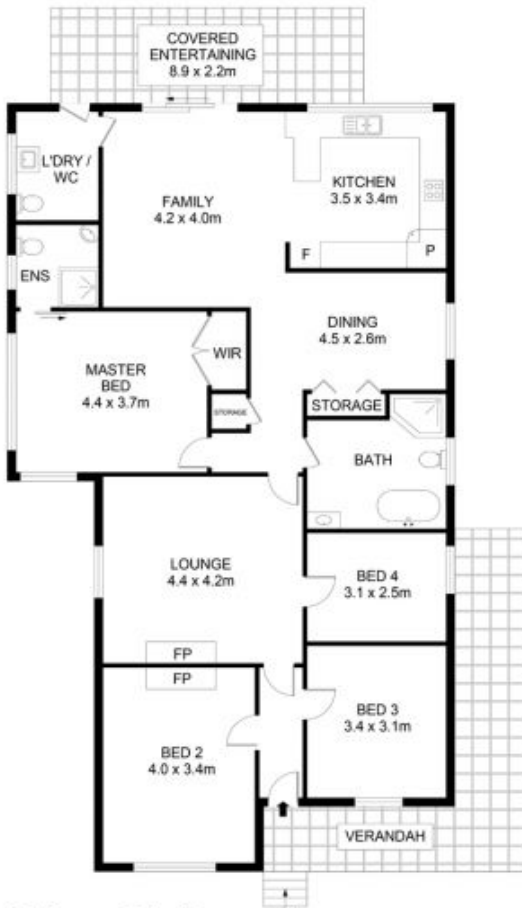
**Josh Saliba**  
(02) 4504 8004



**Iain Rosekilly**  
(02) 4504 8004

[For full version visit the website](https://www.saliba.com.au)

<https://www.saliba.com.au>



## 40 Malsbury Rd, Normanhurst

Disclaimer- Floor Plan measurements are approximate and are for illustrative purposes only. While we cannot doubt the floor plans accuracy, we make no guarantee, warranty or representation as to the accuracy and completeness of the floor plan.

INTERNAL AREA :- 181 SQM  
LAND SIZE :- 695.6 SQM