

SALIBA



28a Yarrara Road Pennant Hills NSW

3  2  1 

We invite you to inspect our new rental listing.

Property Features:

- Timber flooring throughout
- Brand new open plan kitchen and living space
- Three large bedrooms all with built in wardrobes
- Two bathrooms, one brand new
- Air conditioning in the living area
- Single automatic garage and easy street parking
- Shared Driveway with Upstairs Tenant
- Large backyard space
- Gardening included in the rent

Property facts:

- Preferred minimum lease term: 6 months +

Type : House

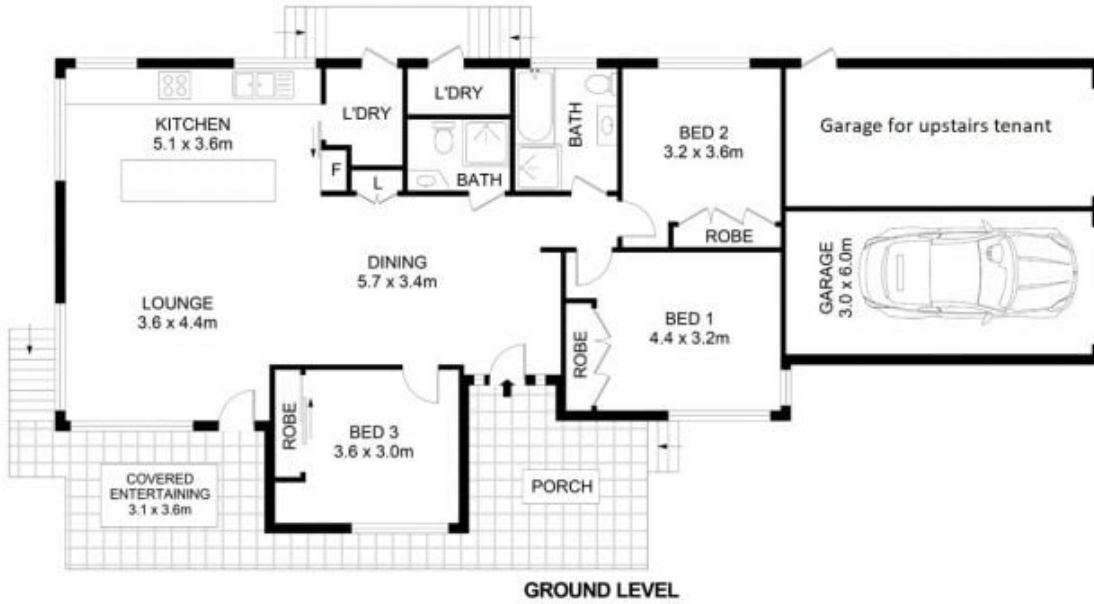
View : <https://www.saliba.com.au/28a-yarrara-road-pennant-hills-nsw-6860641/>



Lucy Hewitt
(02) 4504 8004

[For full version visit the website](https://www.saliba.com.au)

<https://www.saliba.com.au>



GROUND LEVEL



Disclaimer- Floor Plan measurements are approximate and are for illustrative purposes only. While we cannot doubt the floor plans accuracy, we make no guarantee, warranty or representation as to the accuracy and completeness of the floor plan

INTERNAL AREA : 183 SQM
 LAND AREA : 754 SQM
 EXTERNAL AREA : 38 SQM