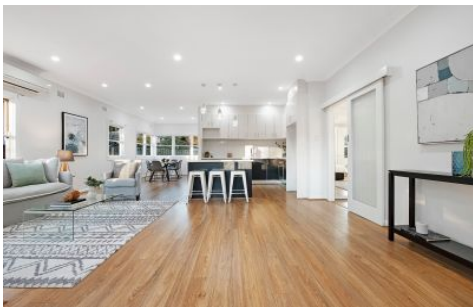





SALIBA



47 The Esplanade Thornleigh NSW

4  3  3 

Offering comprehensive renovations throughout which create modern and easy maintenance interiors, this residence boasts a prime, central location and is move in ready. Embraced by a north-east aspect and the perfect entertainer, this family home presents the ideal lifestyle opportunity to an array of buyers who favour convenience and comfort. Situated on a near-level block with landscaped gardens, a near new concrete driveway and pathway surrounding the property, this home is within close range to Thornleigh Station, Thornleigh Marketplace, and various shops and amenities.

- Desirable blend of classic charm with modern features
- Four spacious bedrooms each with built in wardrobes
- Recent renovations create open plan living arrangement

Type : House
Land Size : 547 sqm
View : <https://www.saliba.com.au/47-the-esplanade-thornleigh-nsw-6683511/>



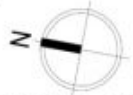
Angelina Sekulić
02 4504 8004

[For full version visit the website](https://www.saliba.com.au)

<https://www.saliba.com.au>



**SITE PLAN
(NOT TO SCALE)**



47 The Esplanade, Thornleigh



Disclaimer- Floor Plan measurements are approximate and are for illustrative purposes only. While we cannot doubt the floor plans accuracy, we make no guarantee, warranty or representation as to the accuracy and completeness of the floor plan

INTERNAL AREA	167 SQM
EXTERNAL AREA	17 SQM
TOTAL AREA	184 SQM
LAND SIZE	547 SQM