

SALIBA



4 Brigalow Place Westleigh NSW

3  1 

Located in a quiet cul-de-sac, this updated three bedroom home is perfect for all. Featuring fresh paint and brand new carpet throughout. Situated a short stroll to Westleigh Village with a bus stop at the end of the street which will take you straight into the heart Thornleigh. This home is the upper level of the residence and receives an abundance of natural light.

- Three good sized bedrooms, all with built in wardrobes
- Generous living area with access to two balconies
- Large modern kitchen with breakfast bar
- Stainless steel appliances including dishwasher
- Updated bathroom, ample street parking available
- Plenty of storage throughout, internal laundry
- This property is upstairs only and includes water usage

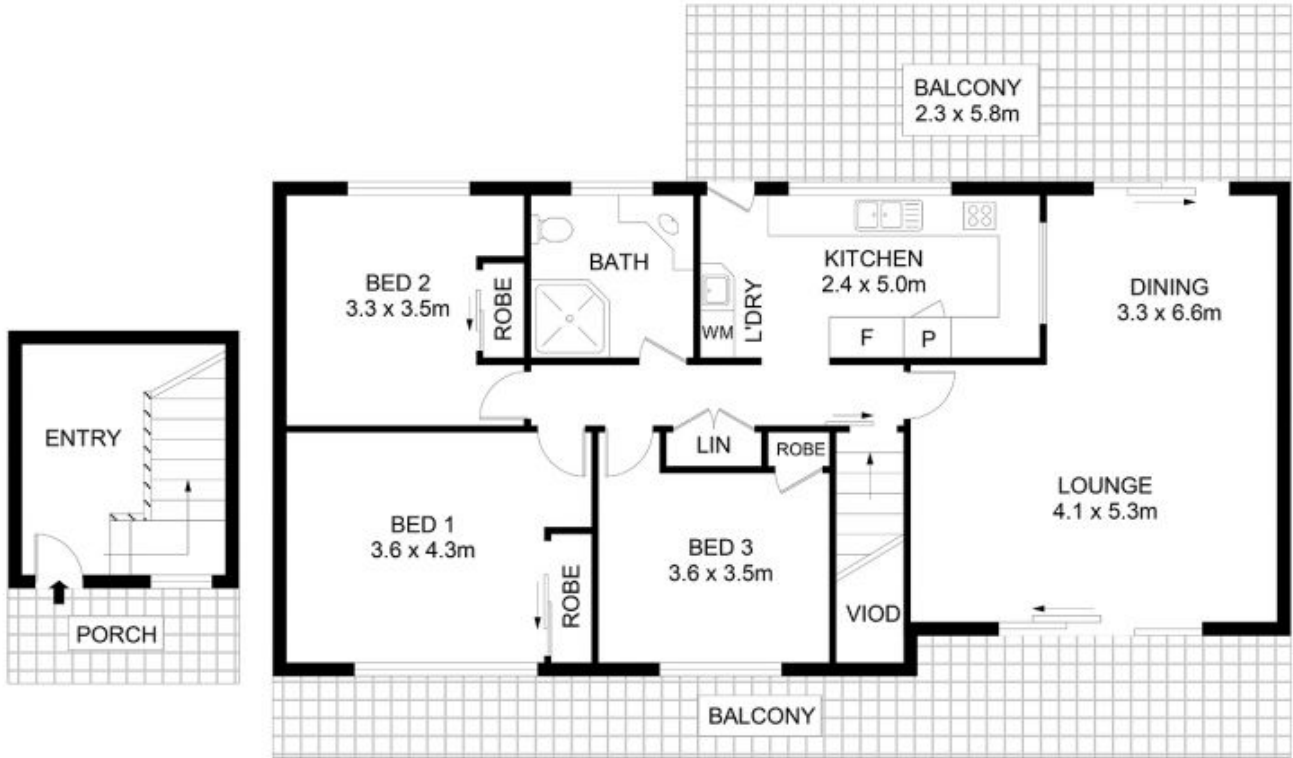
Type : House
Building Size : 192 sqm
Land Size : 696 sqm
View : <https://www.saliba.com.au/4-brigalow-place-westleigh-nsw-6680956/>



Angelina Sekulić
02 4504 8004

[For full version visit the website](https://www.saliba.com.au)

<https://www.saliba.com.au>



4 Brigalow Place, Westleigh



Disclaimer- Floor Plan measurements are approximate and are for illustrative purposes only. While we cannot doubt the floor plans accuracy, we make no guarantee, warranty or representation as to the accuracy and completeness of the floor plan.



| | | |
|---------------|---|---------|
| INTERNAL AREA | > | 108 SQM |
| EXTERNAL AREA | > | 49 SQM |
| TOTAL AREA | > | 157 SQM |