

# SALIBA



11/10-12 Lords Avenue Asquith NSW

2  2  1 

Ideally located in recently built 'The Sherwood' which has been architecturally designed by an award winning Australian builder, this apartment offers convenient positioning in the heart of Asquith being just a 2 minute walk to Asquith shops, restaurants and Asquith Medical Centre, as well as within close range of Asquith Station and Hornsby Westfield shopping and dining precinct. Boasting an easy maintenance lifestyle and featuring a quality gourmet kitchen with ample storage, Mitsubishi air-conditioning, DeLongi appliances, and a large balcony with outdoor gas bayonets. Including spacious bedrooms which are private and separate from the living area, and ample natural light all within a near new, well maintained security complex with modern finishes.

**Type** : Apartment

**Price** : \$ 705,000

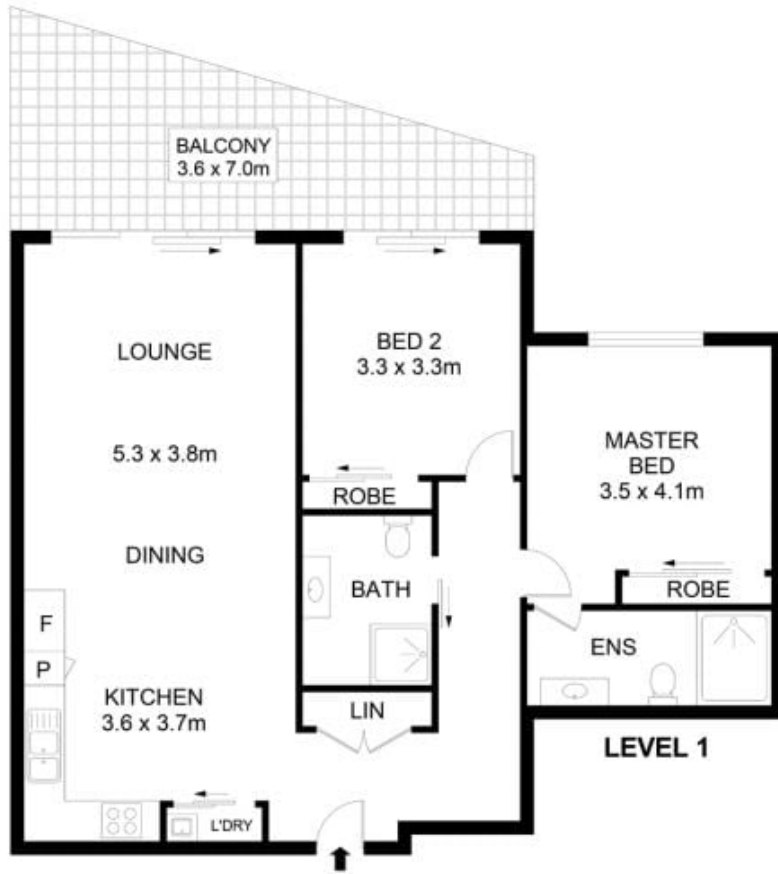
**View** : <https://www.saliba.com.au/111012-lords-avenue-asquith-nsw-6634042/>



**Josh Saliba**  
(02) 4504 8004

[For full version visit the website](https://www.saliba.com.au)

<https://www.saliba.com.au>



**BASEMENT 1**



11/10-12 Lords Avenue, Asquith 2077



Disclaimer- Floor Plan measurements are approximate and are for illustrative purposes only. While we cannot doubt the floor plans accuracy, we make no guarantee, warranty or representation as to the accuracy and completeness of the floor plan.

INTERNAL AREA	101 SQM
EXTERNAL AREA	22 SQM
TOTAL AREA	127 SQM