

# SALIBA



1 Waremba Avenue Thornleigh NSW

4  2  2 

Situated in a leafy, peaceful pocket of Thornleigh, this classic home offers the scope for one to add their own personal touches or move straight in! Set over two levels, its layout offers different living opportunities for families, with three good-sized bedrooms downstairs and a separate master retreat or rumpus located on the upper level. Generously occupying a 765.1sqm corner block, this home enjoys convenient positioning that's within close proximity to an array of amenities, parks, and schools including Normanhurst West Public School and Thornleigh West Public School, with easy access to the main road.

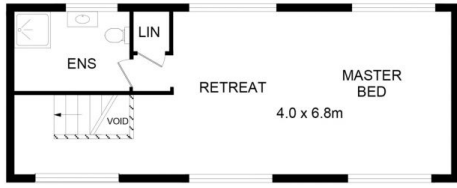
- 4 bedrooms, including master retreat upstairs with en-suite
- Combined living and dining arrangement, capturing ample

[For full version visit the website](https://www.saliba.com.au/1-waremba-ave-nue-thornleigh-nsw-5306453/)

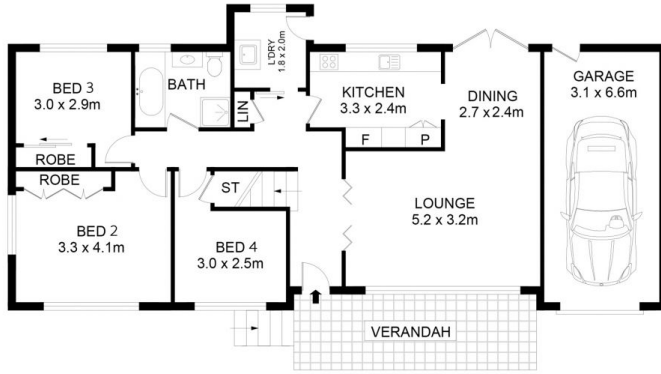
**Type** : House  
**Price** : \$ 1,285,000  
**Land Size** : 765.1 sqm  
**View** : <https://www.saliba.com.au/1-waremba-ave-nue-thornleigh-nsw-5306453/>



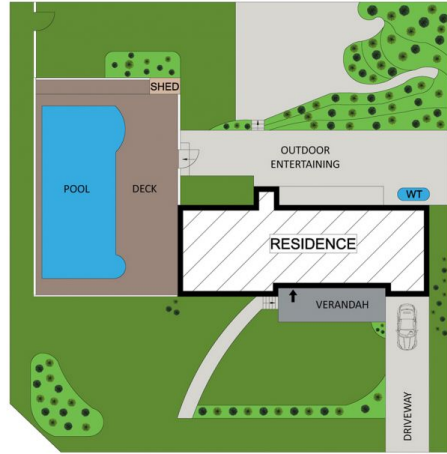
**Josh Saliba**  
(02) 4504 8004



FIRST LEVEL



ENTRY LEVEL



SITE PLAN (NOT TO SCALE)



# 1 Wareemba Avenue Thornleigh

Internal size : 137.9 sqm  
Land size : 765.1 sqm

**DISCLAIMER**

DIMENSIONS ARE APPROXIMATE AND SHOULD ONLY BE USED AS A GUIDE  
THEY ARE NOT TO SCALE AND NO LIABILITY BE ACCEPTED